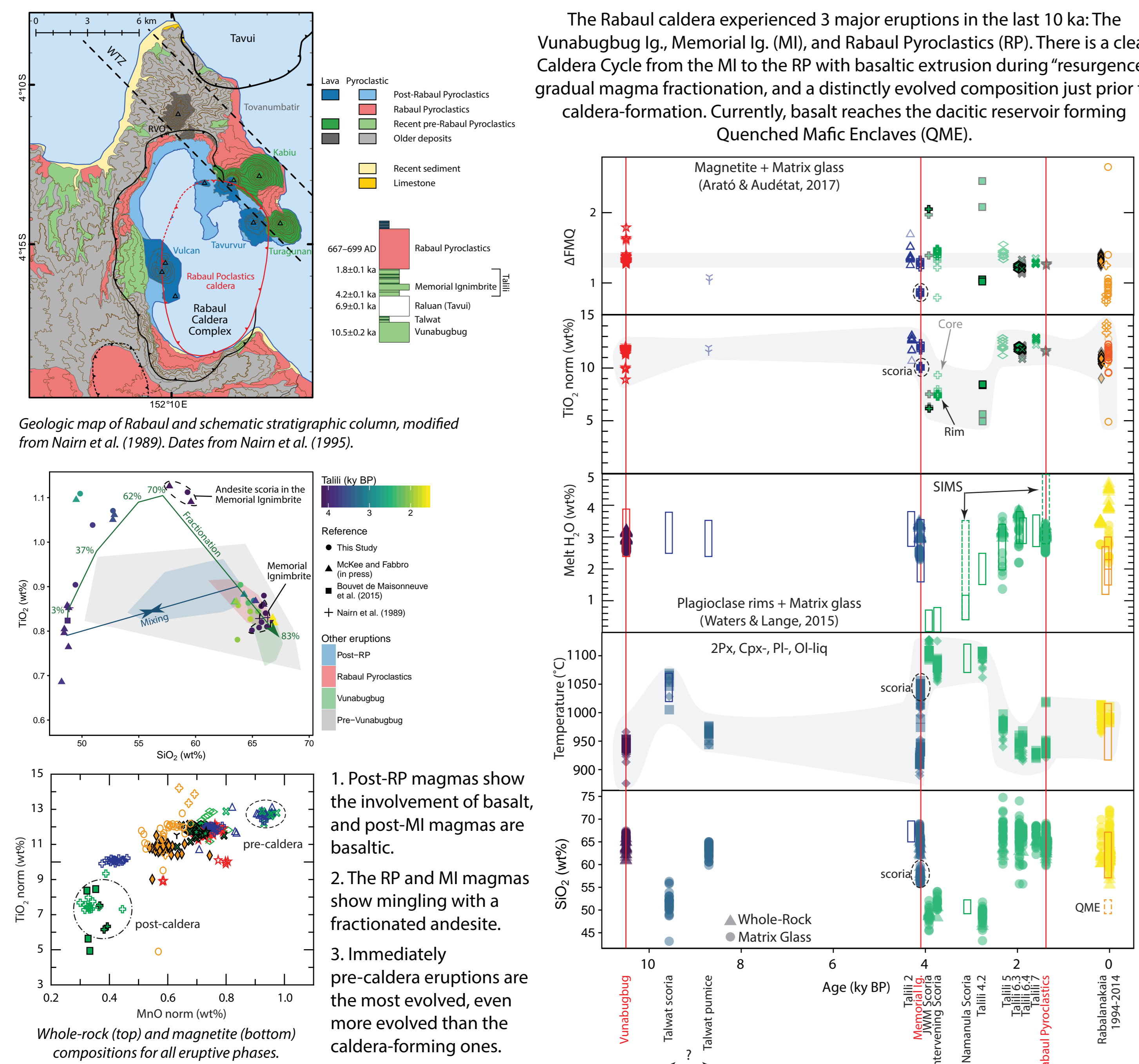


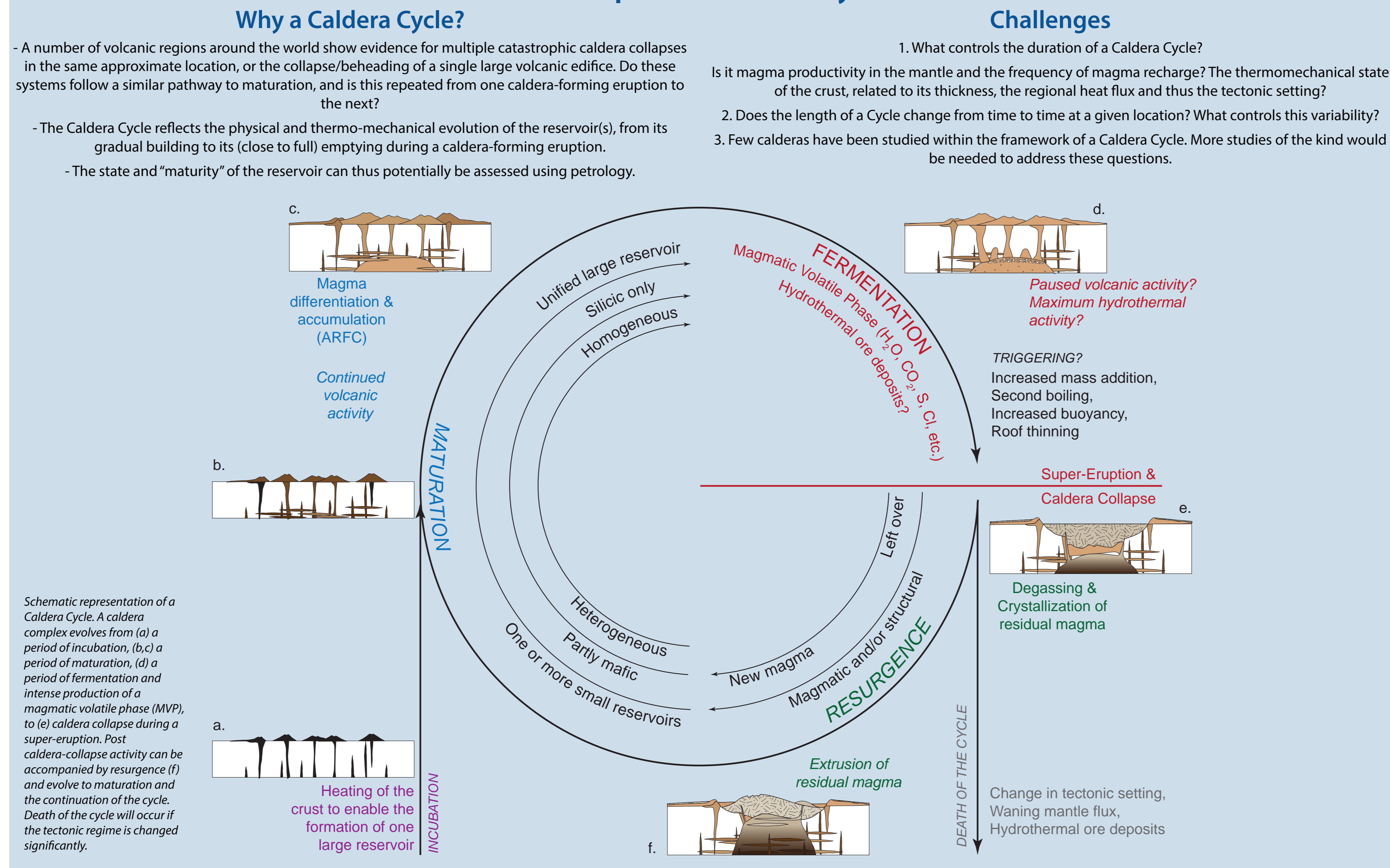
Can we define a "Caldera Cycle" - A series of processes from one caldera-forming eruption to the next that are common to multiple volcanic systems?

Caroline Bouvet de Maisonneuve, Francesca Forni, Gareth Fabbro
Earth Observatory of Singapore & Asian School of the Environment, NTU - carolinebouvet@ntu.edu.sg

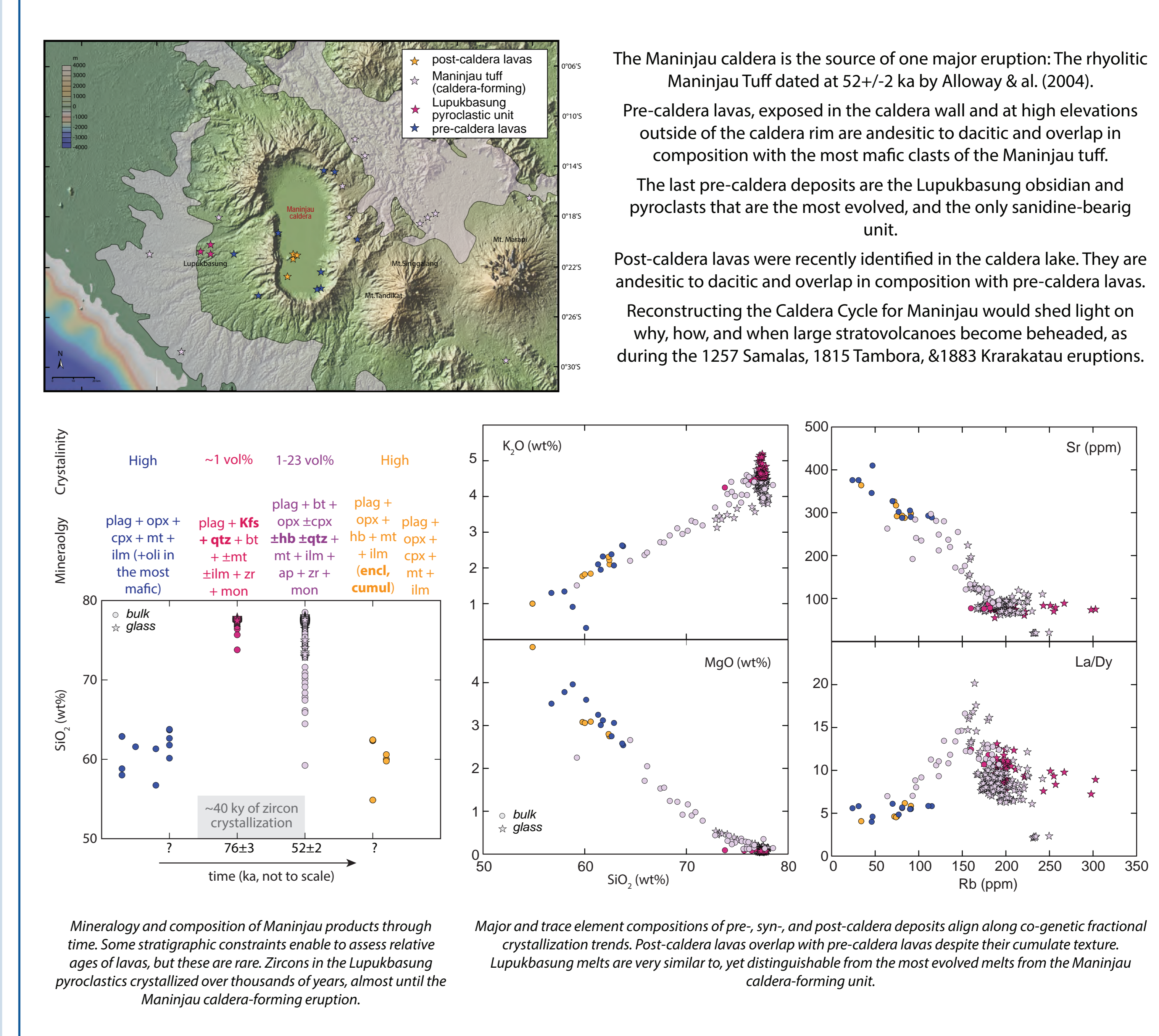
1. Rabaul caldera - Papua New Guinea



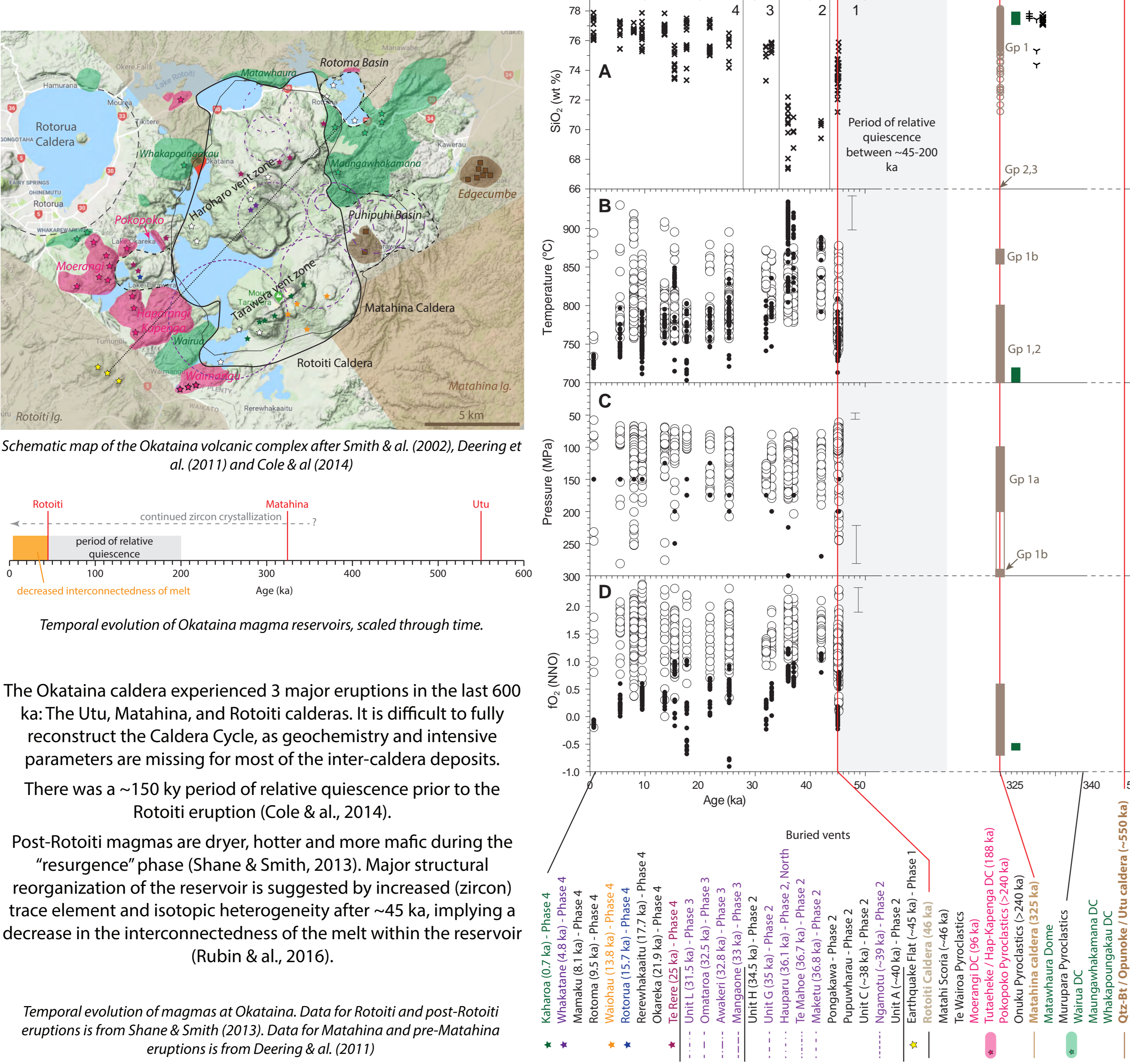
The Proposed Caldera Cycle



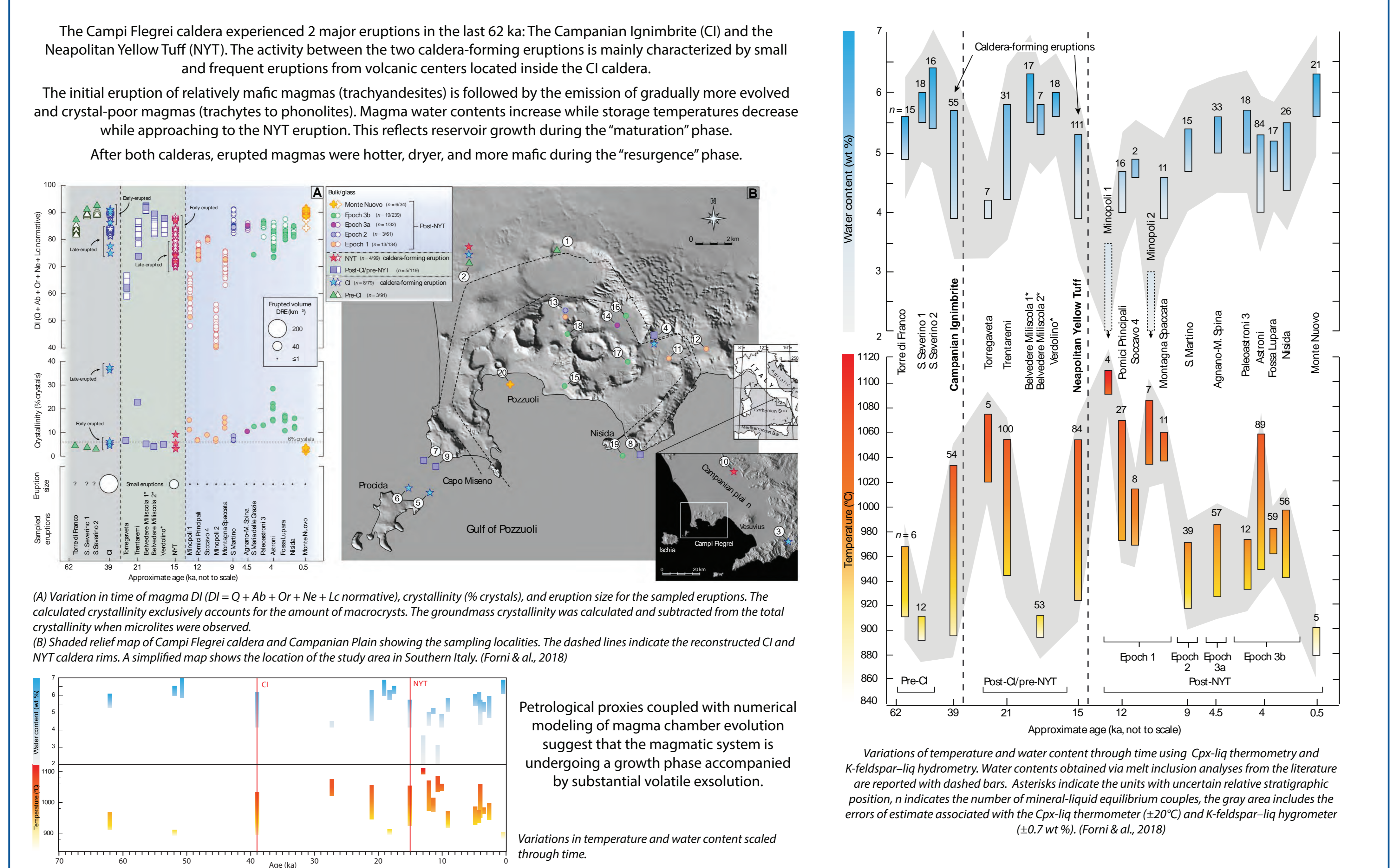
5. Maninjau caldera - Sumatra



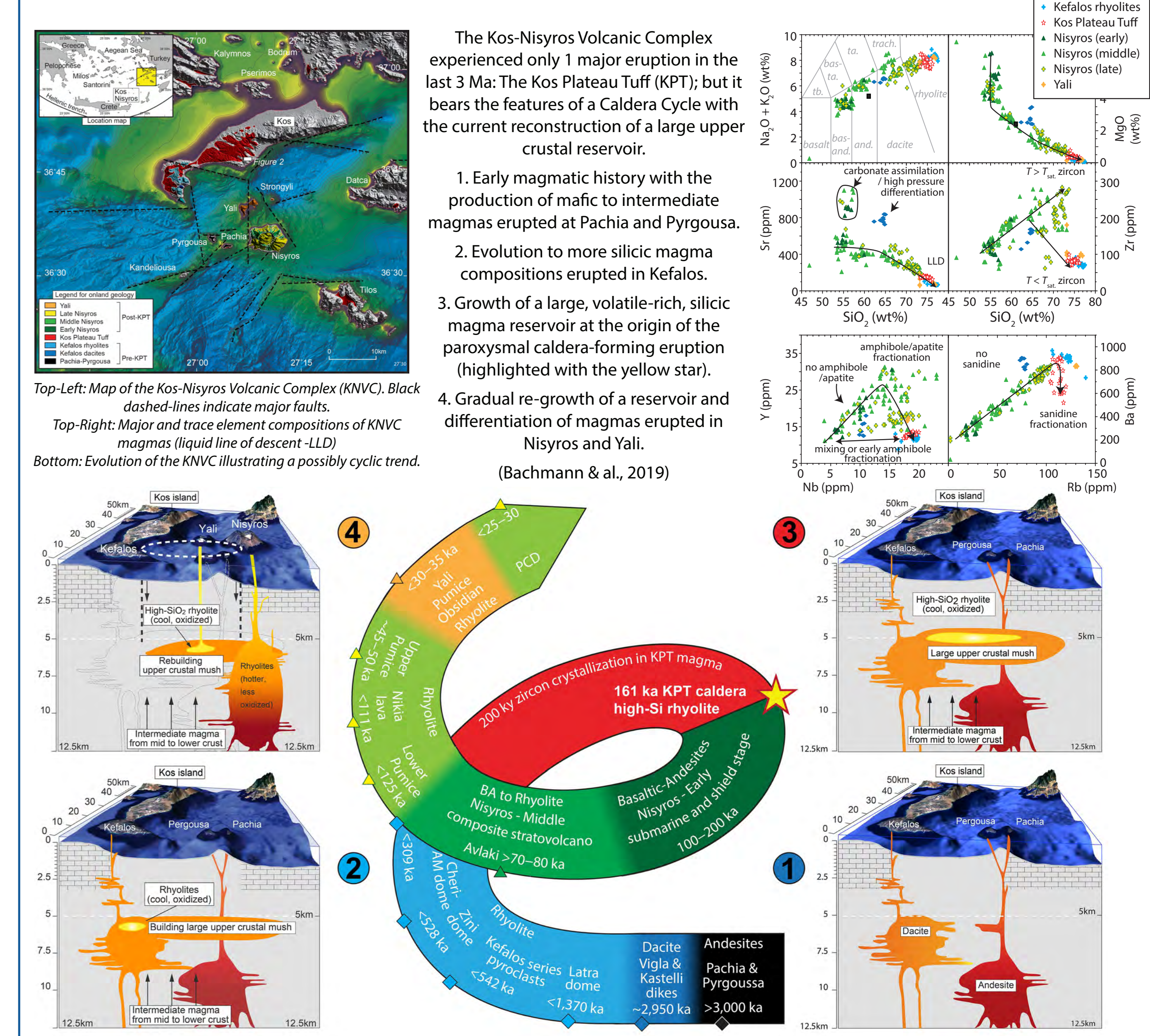
2. Okataina caldera - New Zealand



3. Campi Flegrei caldera - Italy



4. Kos-Nisyros Volcanic Complex - Greece



References:
Alloway, B. V., Pribadi, A., Westgate, J.A., Bird, M., Fifield, L.K., Hogg, A., Smith, I., 2004. Correspondence between glass FT and 14C ages of silicic pyroclastic flow deposits sourced from Maninjau caldera, west-central Sumatra. Earth and Planetary Science Letters 227, 121–133. doi:10.1016/j.epsl.2004.08.014
Arató, R., Audétat, A., 2017. FeTiM - A new oxybarometer for mafic to felsic magmas. Geochimica et Cosmochimica Acta 174, 1–17. doi:10.1016/j.gca.2017.10.008
Bachmann, O., Allen, S.R., Bouvet de Maisonneuve, C., 2019. The Kos-Nisyros-Yali Volcanic Field. Elements 15, 191–196. doi:10.2138/elements15.3.191
Cole, J.W., Deering, C.D., Burt, R.M., Swain, S., Shane, P.A.R., Matthews, N.E., 2014. Okataina Volcanic Centre, Taupo Volcanic Zone, New Zealand: A review of volcanism and synchronous plume development in an active, dominantly silicic caldera system. Earth-Science Reviews 128, 1–17. doi:10.1016/j.earscirev.2013.10.008
Deering, C.D., Cole, J.W., Vogel, T.A., 2011. Extraction of crystal-poor rhyolite from a hornblende-bearing intermediate melt: A case study of the caldera-forming Matahina eruption, Okataina volcanic complex. Contributions to Mineralogy and Petrology 161, 129–151. doi:10.1007/s00410-010-0524-0
Forni, F., Degruyter, W., Bachmann, O., Asti, G., De Mollo, S., 2018. Long-Term magmatic evolution reveals the beginning of a new caldera cycle at Campi Flegrei. Science Advances 4, doi:10.1126/sciadv.aar9401
Naim, I. A., Tabei, B., Wood, C. P., & McKee, C. O. (1989). Rabaul Caldera, Papua New Guinea—1.25,000 reconnaissance geologic map and eruption history. New Zealand Geological Survey.
Naim, I. A., McKee, C. P., & Wood, C. P. (1995). Geology and eruptive history of the Rabaul Caldera area, Papua New Guinea. Journal of Volcanology and Geothermal Research, 69(3–4), 255–284. DOI:10.1016/0377-0273(95)00035-6
Rubin, A., Cooper, K.M., Leever, M., Wimpenny, J., Deering, C., Rooney, T., Gravelly, D., Yin, Q. zhu, 2016. Changes in magma storage conditions following caldera collapse at Okataina Volcanic Center, New Zealand. Contributions to Mineralogy and Petrology 171, 1–18. doi:10.1007/s00410-015-1216-6
Shane, P., Smith, V.C., 2013. Using amphibole contents to reconstruct magma storage temperatures and pressures for the post-caldera collapse volcanism at Okataina volcano, Lithos 156–159, 159–170. doi:10.1016/j.lithos.2012.11.008
Smith, V.C., Shane, P., Smith, I.E.M., 2002. Tephrostratigraphy and geochemical fingerprinting of the Mangrove Subgroup tephra beds, Okataina Volcanic Center, New Zealand. New Zealand Journal of Geology and Geophysics 45, 207–219. doi:10.1080/00288306.2002.9514969
Waters, L.E., Lange, R.A., 2015. An updated calibration of the plagioclase-liquid hygrometer-thermometer applicable to basalts through rhyolites. American Mineralogist 100, 2172–2184. doi:10.2138/am-2015-2327
Journal of Geology and Geophysics 45, 207–219. doi:10.1080/00288306.2002.9514969
Waters, L.E., Lange, R.A., 2015. An updated calibration of the plagioclase-liquid hygrometer-thermometer applicable to basalts through rhyolites. American Mineralogist 100, 2172–2184. doi:10.2138/am-2015-2327